



**CARBON AND STAINLESS STEEL
MANUFACTURING AND INSTALLATION**

**INDUSTRIAL AIR DUCTS
STEEL STRUCTURES
SILOS, HOPPERS, CYCLONES
EXPANSION JOINTS
PARTS ON DEMAND**



Bulgaria

Manufacturing facility
6260 Radnevo, Bulgaria
14 Zavodska Street

+359 899 946 574

office@metalinvest-remko.com
www.metalinvest-remko.com

The Hague, Netherlands

Metalinvest Remko

+31 6 170 88424

office@metalinvest-remko.com
t.dimitrov@metalinvest-remko.com

France

Metalinvest Remko

2 bis Boulevard Montreal
06200 Nice

+33 661 296060
+33 666 829085

office@metalinvest-remko.com
g.gaberov@metalinvest-remko.com
a.petrov@metalinvest-remko.com

Middle East/ GCC / Africa

Metalinvest Remko

+359 886 797 246

office2metalinvest-remko.com
v.dimov@metalinvest-remko.com

USA

Metalinvest Remko

1673 Bay RD, #305
Miami Beach, Florida 33139

+1 (905) 599 - 0454
+1 (630) 923 - 0723

office@metalinvest-remko.com
p.petrov@metalinvest-remko.com
k.valenti@metalinvest-remko.com

**CARBON AND STAINLESS STEEL
MANUFACTURING AND INSTALLATION**

**INDUSTRIAL AIR DUCTS
STEEL STRUCTURES
SILOS, HOPPERS, CYCLONES
EXPANSION JOINTS
PARTS ON DEMAND**



Quality
is our business plan.



More than 23 years experience in manufacturing and installation



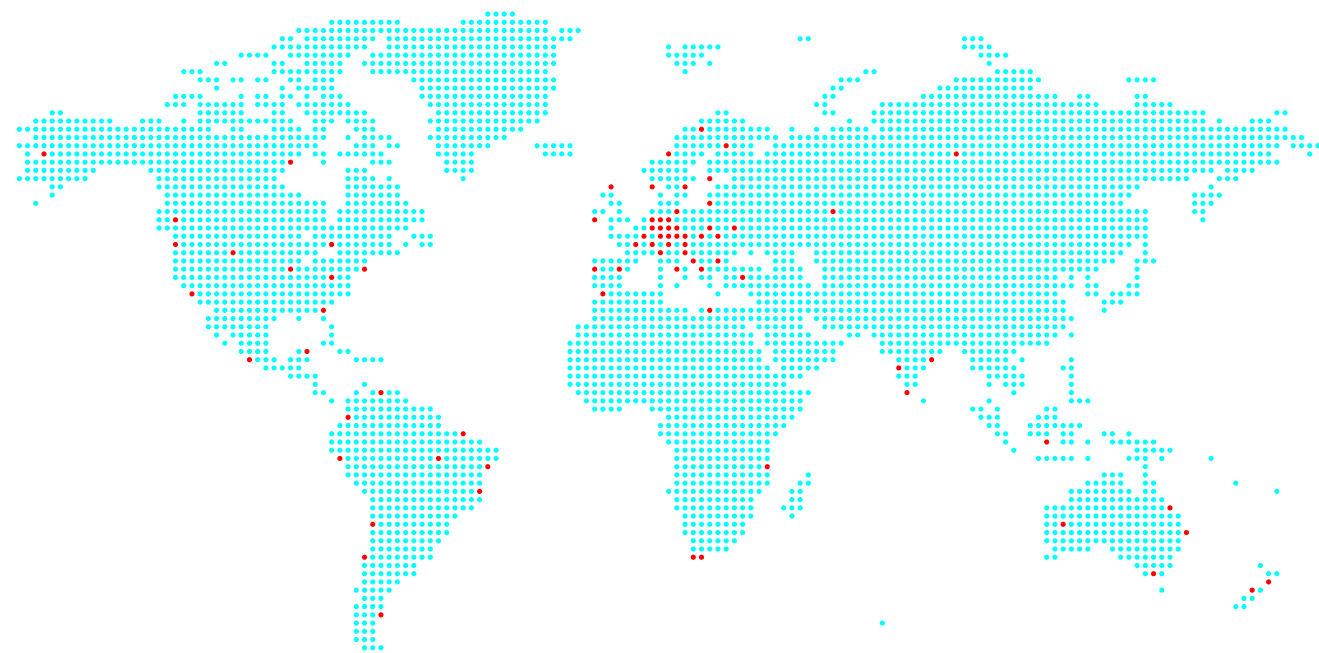
2025 | 2026

METALINVEST REMKO
INDUSTRIAL DUCTS & PARTS

WWW.METALINVEST-REMKO.COM

OUR CLIENTS

FROM ALL AROUND THE GLOBE



Austria
Germany
Finland
Sweden
Czech Republic
Switzerland
Bulgaria
Romania

Belgium
France
Netherlands
Spain
Estonia
Lithuania
Latvia
Norway

United Kingdom
Ireland
Russia
USA
Canada
Mexico
Australia
New Zealand

WE ARE PROUD TO COLLABORATE WITH LEADING ORGANIZATIONS ACROSS A BROAD SPECTRUM OF INDUSTRIES:

WOOD PROCESSING INDUSTRY



ENERGY GENERATION & GREEN ENERGY PLANTS

GLASS FABRICATION INDUSTRY



PULP & PAPER FABRICATION INDUSTRY

ENGINEERING & INDUSTRIAL SOLUTIONS COMPANIES



MINING & CEMENT INDUSTRY

OVER THE YEARS, WE HAVE BUILT TRUST AND ESTABLISHED ENDURING PARTNERSHIPS WITH COMPANIES WORLDWIDE. OUR CLIENTS SPAN EUROPE, ASIA, THE MIDDLE EAST, NORTH AND SOUTH AMERICA, AUSTRALIA AND NEW ZEALAND RELYING ON OUR COMMITMENT TO DELIVERING EXCEPTIONAL QUALITY, PRECISION, AND RELIABILITY. FROM INTRICATE COMPONENTS TO LARGE-SCALE INDUSTRIAL STRUCTURES, WE ENSURE EVERY PROJECT IS EXECUTED TO THE HIGHEST STANDARDS.



OUR ERP SYSTEM

TRACEABILITY, CONTROL AND PRODUCTION EFFICIENCY

Our ERP System(Enterprise Resource Planning system) provides complete traceability for every component in the production process- from design to packaging. It allows tracking who has worked on each task, the quantities and tonnage processed, and the productivity of each department daily, weekly, or monthly. Additionally, our system provides customers with unique access codes, allowing them to monitor the status of their orders directly. This ensures transparency, speeds up communication, and gives clients confidence in the production process.

The screenshot displays a production order summary with the following details:

- Contracting Authority:** Miroslav Pavlov Stoev, Penka Yovkova Stoeva
- Engineer:** Hristo Nikolaev Kefalov
- Date:** 18.08.2025 16:36
- Deadline:** 05.01.2026
- Production deadline:** 02.01.2026

The main table shows task completion progress across various departments:

Task Name	02.08.2025	02.09.2025	02.10.2025	02.11.2025	02.12.2025	02.01.2026	08.01.2026
Production deadline 02.01.2026	100.00%	100.00%	100.00%	100.00%	100.00%	93.15%	86.30%
BOTTOM PART transport and packing	1 of 1	1 of 1	1 of 1	1 of 1	1 of 1	0 of 1	0 of 1
Installation of stainless steel cladding	1 of 1	1 of 1	1 of 1	1 of 1	1 of 1	0 of 1	0 of 1
Installation of insulation	1 of 1	1 of 1	1 of 1	1 of 1	1 of 1	0 of 1	0 of 1

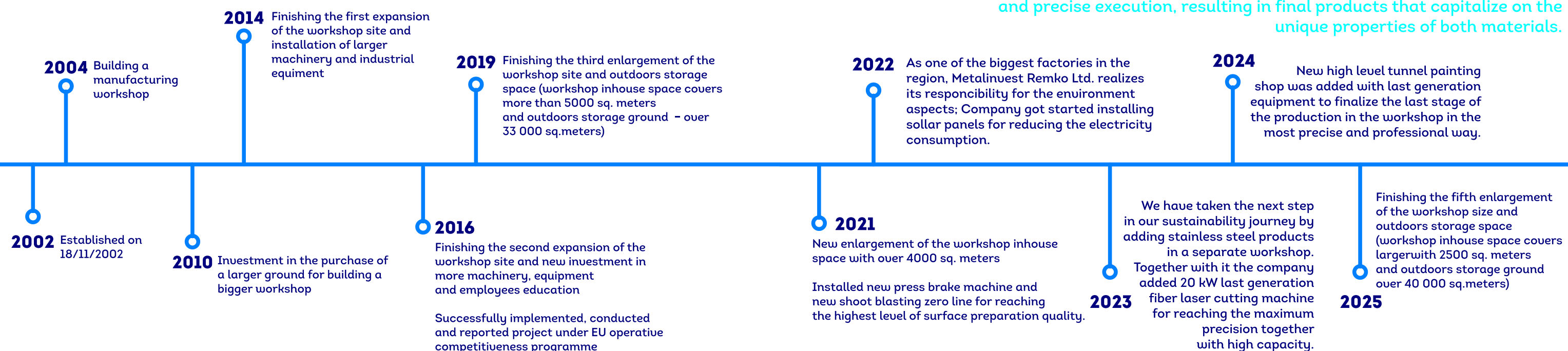
305	✓ P2412804 - 2 sets VBVAI ducts - 40.7t	12.08.2025	05.01.2026	Engineer: Hristo Nikolaev Kefalov Technical manager: Miroslav Pavlov Stoev Penka Yovkova Stoeva Added by: Mariana Marinova Popova	41.87%
378	✓ PO_4500067484 - 5.4 t	09.10.2025	07.01.2026	Engineer: Hristo Nikolaev Kefalov Technical manager: Sanji Bikoy Added by: Mariana Marinova Popova	86.90%
381	✓ PO_4500067527 - 8 tons	09.10.2025	07.01.2026	Engineer: Hristo Nikolaev Kefalov Technical manager: Tapendra Shahi Added by: Mariana Marinova Popova	73.61%
463	✓ Emergency chimney	11.12.2025	09.01.2026	Engineer: Zlatomir Genchev Ganchev Technical manager: Ivaylo Dinev Nedelchev Added by: Mariana Marinova Popova	95.23%
391	✓ PO_4500068755 - 55 tons	16.10.2025	12.01.2026	Engineer: Hristo Nikolaev Kefalov Technical manager: Doniyorjon Elmurod Ugli Toshpulatov Added by: Mariana Marinova Popova	70.41%
234	Capacities Project 3183-25 - 66 t	12.06.2025	15.01.2026	Engineer: Rashid Hakimzhanovich Akmalov Technical manager: Sanji Bikoy Added by: Mariana Marinova Popova	18.98%
476	✓ PO_5001148 - 0.083 t	18.12.2025	15.01.2026	Engineer: Zlatomir Genchev Ganchev Technical manager: Ivan Yordanov Ivanov Added by: Mariana Marinova Popova	14.28%



23 YEARS OF GROWTH AND ESTABLISHING QUALITY FOR OUR CUSTOMERS

INNOVATIVE MATERIAL EXPERTISE

Our company specializes in fabricating components from both carbon steel and stainless steel, showcasing our expertise in working with these diverse materials. One of our most notable capabilities lies in producing hybrid components, where carbon and stainless steel are seamlessly combined into a single unit. These projects demand advanced technical know-how and precise execution, resulting in final products that capitalize on the unique properties of both materials.





WE ARE CERTIFICATED .

Metalinvest Remko Ltd is certified according to ISO 9001: 2015, ISO 14001: 2015 and ISO 45001: 2018. As well as according to EN ISO 3834-2: 2005 and EN 1090-2: 2018(EXC-4) and the special pressure vessels standard AD2000 as well as PED2014.



The company is a member of the Bulgarian Chamber of Commerce and Industry, as well as The Constructions Chamber of Bulgaria with a certificate for construction from first to fifth category.

SCAN & CHECK US HERE



https://www.certipedia.com/companies/369930/system_certificates?locale=en

SURFACE PREPARATION, CLEANING & BEVELING

OUR ADVANCED SURFACE PREPARATION PROCESSES ARE DESIGNED TO ENHANCE THE DURABILITY AND PERFORMANCE OF CARBON STEEL COMPONENTS

- Sandblasting to achieve a Sa 2.5 cleanliness grade and optimal surface roughness for improved adhesion and protection.
- Beveling to create precise edges for welding and assembly, enhancing structural integrity and fit.

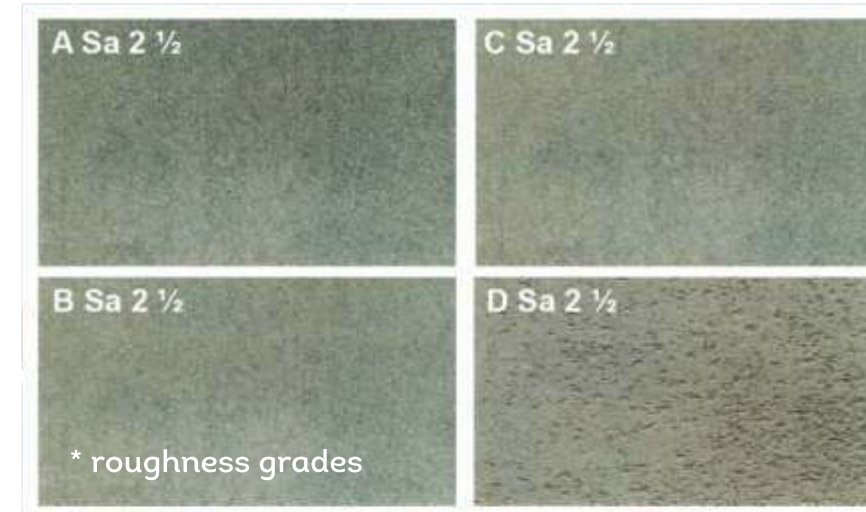
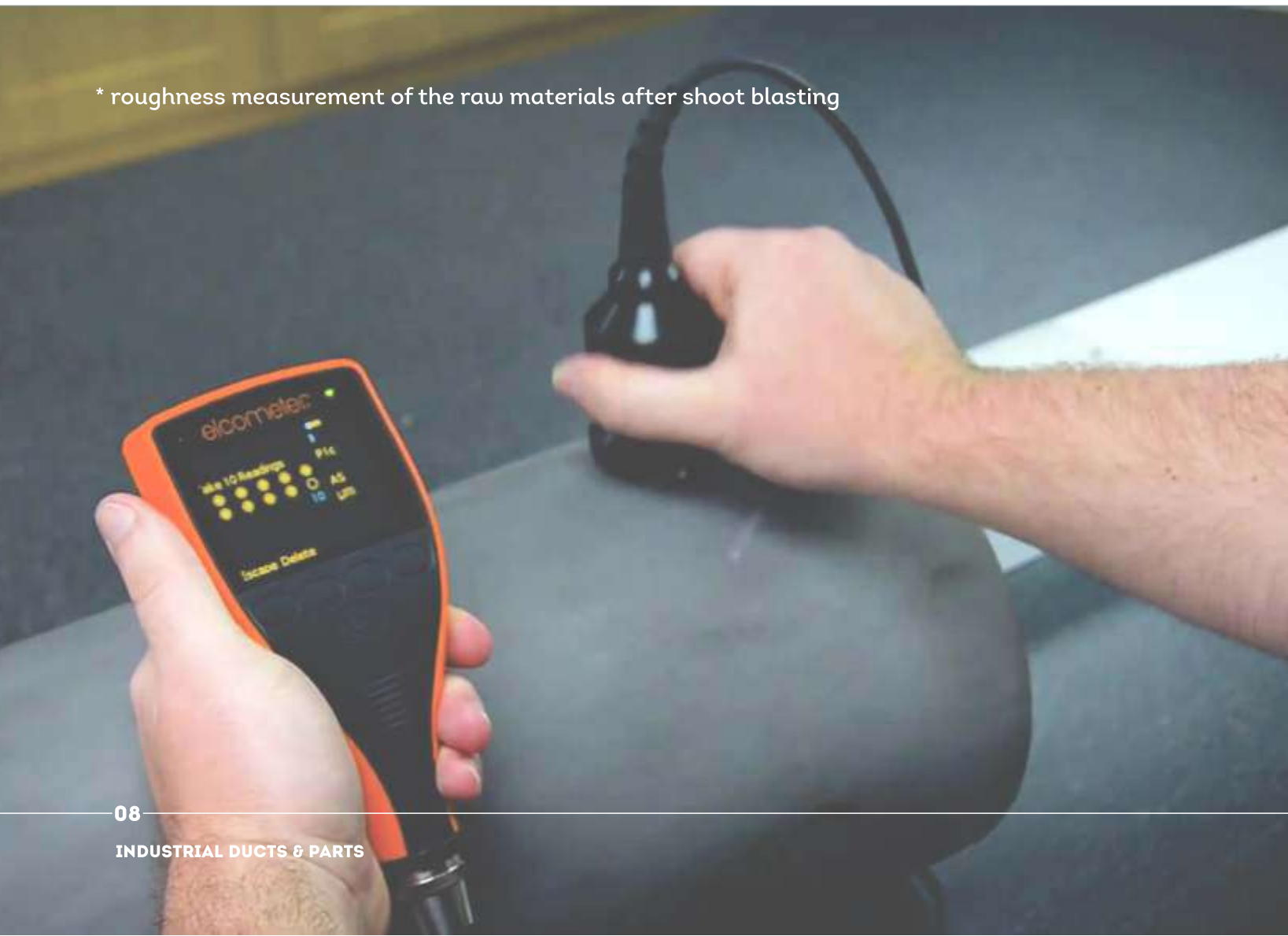


* main shootblasting hall with blasting zero automated line for surface preparation



* process of beveling the sharp edges and preparation for high quality welding

* roughness measurement of the raw materials after shoot blasting



* roughness grades



* sandblasting by hand



* second sandblasting hall



CUTTING

OUR CUTTING SOLUTIONS ENABLE US TO HANDLE A WIDE RANGE OF MATERIALS AND PROJECT REQUIREMENTS WITH UNMATCHED PRECISION AND EFFICIENCY.

- Fiber Laser Cutting – Featuring a 20 kW cutting table with dimensions of 2000 x 6000 mm, this last-generation equipment ensures high precision and speed, even for complex geometries.
- Plasma Cutting – Two plasma cutting tables provide flexibility: one with a length of 12,000 mm for large-scale components, and another equipped with a gas cutting head for handling thick steel plates and profiles.
- Gas Cutting – Ideal for heavy-duty applications requiring high accuracy in thick material processing.
- Bandsaw Cutting – Specialized for processing steel profiles and seamless pipes, providing clean cuts with precise tolerances and minimal material waste.



BENDING & MILLING

BENDING AND MILLING ARE INTEGRAL PROCESSES IN OUR PRODUCTION WORKFLOW, ENSURING PRECISION AND STRUCTURAL INTEGRITY. OUR CAPABILITIES INCLUDE:

- Press Brake Bending – Utilizing advanced press brakes, we achieve accurate angles and dimensions for sheet metal components.
- Roll Bending – Transforming flat sheets into cylindrical shapes, such as pipes, with precision and consistency.
- Milling – Carefully milling and manipulating every hole and every sharp edge of the individual parts into complete structures. Each part is meticulously checked to ensure dimensional accuracy and readiness for subsequent processes, such as welding.



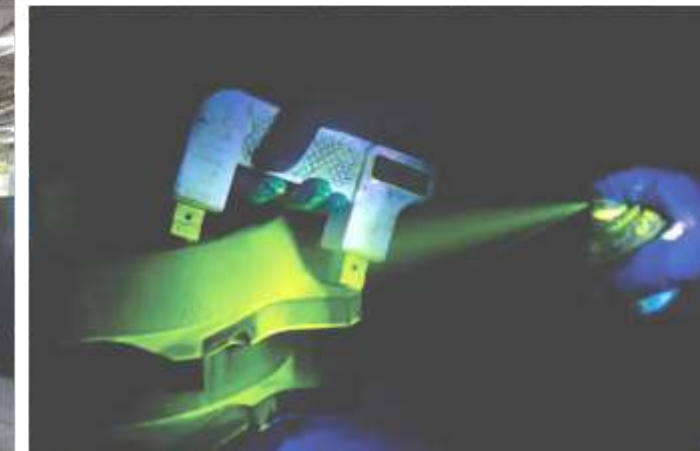
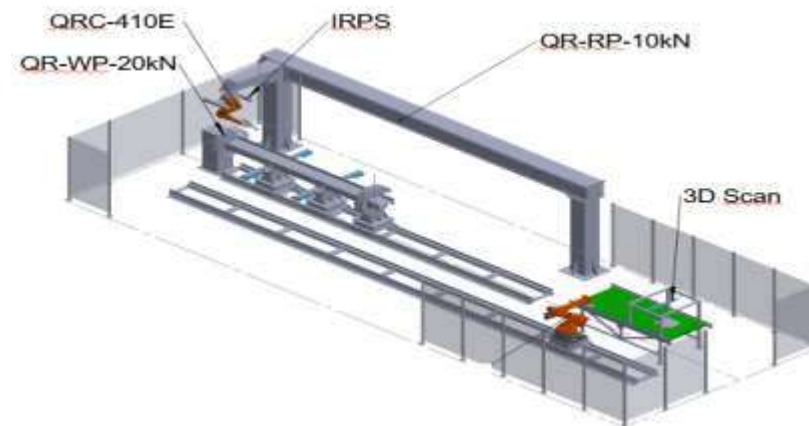
THESE PROCESSES ARE EXECUTED WITH A FOCUS ON QUALITY AND EFFICIENCY, FORMING THE FOUNDATION FOR THE PRODUCTION OF HIGH PERFORMANCE STEEL COMPONENTS.



WELDING IS IN OUR ROOTS

WELDING IS AT THE CORE OF OUR STEEL FABRICATION PROCESSES, WHERE PRECISION AND EXPERTISE ENSURE THE DURABILITY AND STRENGTH OF EVERY PRODUCT. OUR WELDING CAPABILITIES INCLUDE:

- MIG/MAG welding
- Tig welding
- Laser welding
- Semi-automatic welding
- Orbital welding
- Linear welding
- Robotic welding



CORROSION PROTECTION

TO ENSURE THE LONGEVITY AND DURABILITY OF OUR STEEL PRODUCTS, WE PROVIDE PROFESSIONAL CORROSION PROTECTION SERVICES USING ADVANCED TECHNOLOGIES AND HIGH QUALITY MATERIALS. OUR CAPABILITIES INCLUDE:

- Industrial Tunnel Painting - Featuring pre-heating, primer application, and drying stages, our tunnel system guarantees optimal coating adhesion and a flawless finish.
- Primer Application - A crucial step to protect the surface and enhance the durability of the final paint layers.
- Final Painting - Utilizing state-of-the-art equipment and premium paint products from globally recognized brands to deliver a durable and aesthetically appealing finish.

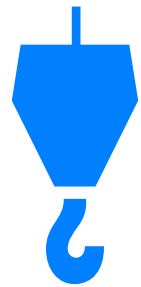


OUR EXPERIENCED TEAM, COMBINED WITH CUTTING EDGE EQUIPMENT, ENSURES CONSISTENT QUALITY AND PROTECTION, MEETING THE MOST DEMANDING INDUSTRY STANDARDS.



WE CAN LIFT TOO.

23
CRANES



WITH CAPACITY
UP TO 20 TONS

TOTAL OF 23 CRANES WITH DIFFERENT LIFTING CAPACITIES WORK IN THE PRODUCTION BASE, MOST OF WHICH WORK IN SYNCHRONY

OUR FACILITIES ARE EQUIPPED WITH ROBUST LIFTING CAPABILITIES TO HANDLE EVEN THE MOST DEMANDING PROJECTS. WITH A TOTAL OF 23 CRANES THAT CAN WORK IN SYNCHRONIZED OPERATION, WE ENSURE SAFE AND EFFICIENT HANDLING OF HEAVY COMPONENTS. OUR MAXIMUM LIFTING CAPACITY REACHES UP TO 20 TONS, ENABLING US TO MANAGE LARGE SCALE ASSEMBLIES AND HEAVY DUTY STEEL STRUCTURES WITH PRECISION AND RELIABILITY.



Inside Metalinvest Remko production workshop in Randevo, Bulgaria

LIFTING? YES WE CAN!

2 pcs. cranes in a paint shop with a capacity of up to 3 tons

2 pcs. cranes in production workshop 1 by 8 tons lifting capacity working in synchrony for lifting large parts

3 pcs. cranes in the workpiece workshop with a capacity of up to 5 tons

2 pcs. external bridge cranes with lifting capacity of 5 and 8 tons

4 pcs. cranes in production workshop 2 working in synchrony for lifting large parts up to 20 tons

2 pcs. cantilever cranes in a sandblasting workshop with a load capacity of 1 ton

4 pcs. cranes with lifting capacity of 5 tons each in production stainless steel workshop

4 pcs. cranes in the back side of the workshop with lifting capacity of 5 tons each

PRODUCTS & PARTS

WE SPECIALIZE IN THE FABRICATION OF HIGH QUALITY PRODUCTS TAILORED TO VARIOUS INDUSTRIAL APPLICATIONS. OUR MAIN PRODUCT CATEGORIES INCLUDE:

- Air Ducts – Custom-designed solutions for industrial ventilation systems, ensuring efficient airflow and durability.
- Steel Structures – Precision-engineered components for construction, infrastructure, and industrial facilities.
- Silos – Robust storage solutions for bulk materials, designed to withstand demanding environments.
- Hoppers – Engineered for efficient material handling and processing in various industries.
- Cyclones – Advanced separation systems for dust collection and air filtration.
- Expansion Joints – Flexible and durable components for accommodating movement and reducing stress in piping systems.

Each product is manufactured to meet strict quality standards, with design and production processes tailored to the specific requirements of our clients.





PRODUCTS & PARTS

AIR DUCTS FROM CARBON AND STAINLESS STEEL

Our air ducts are tailored for industrial-scale ventilation, ensuring efficient air distribution and durability under demanding conditions. We fabricate ducts from both carbon steel and stainless steel, depending on the specific application, and offer solutions for:

- Systems for industrial ventilation.
- Corrosion-resistant ducts for environments with chemical exposure.
- Custom geometries and sizes to fit complex layouts. Each duct is designed with precision to ensure no air leakage, energy efficiency, and long service life.



PRODUCTS & PARTS

STEEL STRUCTURES - HEAVY AND LIGHT

We manufacture steel structures for a variety of industrial and infrastructural projects, including:

- Building frameworks for factories, warehouses, and commercial spaces.
- Support structures for heavy machinery and industrial plants.
- Customized steel assemblies for specialized applications.

Our expertise in welding, assembly, and surface treatment ensures that every structure is robust, reliable, and compliant with international standards.



PRODUCTS & PARTS

SILOS, HOPPERS & CYCLONES

We specialize in the fabrication of solutions for storage, material handling, and particle separation, ensuring efficiency and reliability across various industrial processes.

- Silos: Engineered for the storage of bulk materials such as grain, cement, and chemicals, our silos are constructed with corrosion-resistant materials and seamless welding to ensure airtight and moisture-proof performance. Available in custom dimensions, they are tailored to meet specific capacity requirements, whether for stationary or transportable applications.
- Hoppers: Designed for smooth material discharge and handling, our hoppers are built using abrasion-resistant materials to withstand demanding environments. They integrate seamlessly into processing systems and are customized to fit existing setups, ensuring optimal efficiency in industrial operations.
- Cyclones: Built for air filtration, dust collection, and particle separation, our cyclones deliver high separation efficiency, even in high-pressure and high-temperature environments. With durable construction and customizable configurations, they are ideal for



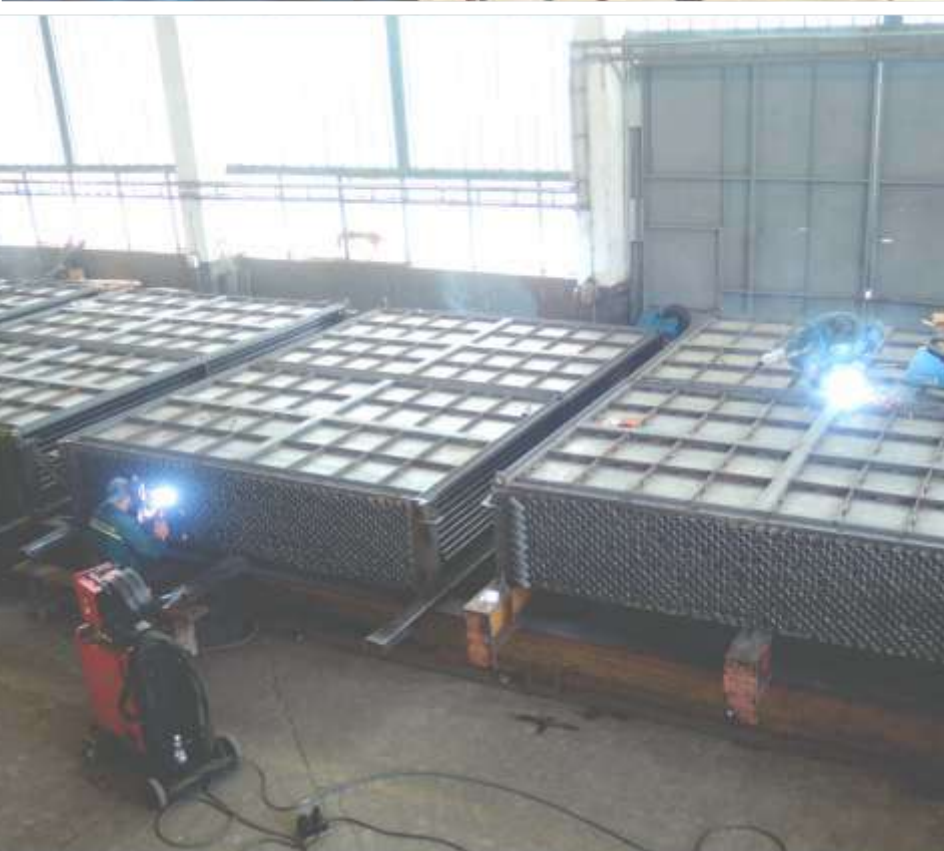
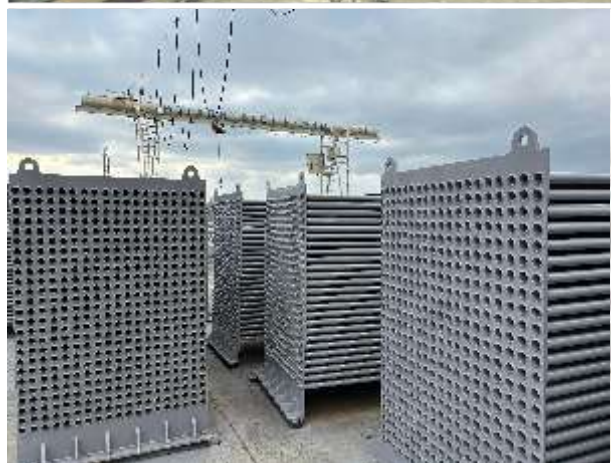
TOGETHER, THESE PRODUCTS ARE CRAFTED TO MEET THE RIGOROUS DEMANDS OF MODERN INDUSTRY, COMBINING DURABILITY, PRECISION, AND INNOVATION TO OPTIMIZE MATERIAL MANAGEMENT AND ENVIRONMENTAL PERFORMANCE.

PRODUCTS & PARTS

EXPANSION JOINTS

We fabricate expansion joints that accommodate thermal movement, vibration, and misalignment in piping systems. Our solutions include: Metallic expansion joints for high-pressure and high-temperature applications. Flexible joints for systems requiring greater elasticity. Hybrid designs combining metal and non-metallic components for specialized use. Each joint is rigorously tested to ensure durability, flexibility, and compatibility with various industrial systems.





PRODUCTS & PARTS

HEAT EXCHANGERS

Our heat exchangers are engineered to meet the demands of diverse industrial applications, delivering efficient thermal performance and durability in the most challenging environments.

- Custom Designs: We provide tailor-made heat exchanger solutions, including shell-and-tube, plate, and finned designs, to suit specific thermal requirements.
- Material Expertise: Depending on operational needs, we fabricate exchangers from carbon steel, stainless steel, or hybrid materials to ensure optimal corrosion resistance and thermal conductivity.
- Precision Manufacturing: Using advanced fabrication techniques, we guarantee the highest levels of quality and reliability, ensuring seamless integration into complex systems.

Heat exchangers from our production line are widely used in industries such as energy generation, chemical processing, HVAC systems, and food production. Each unit is rigorously tested to meet international standards for safety, efficiency, and longevity.

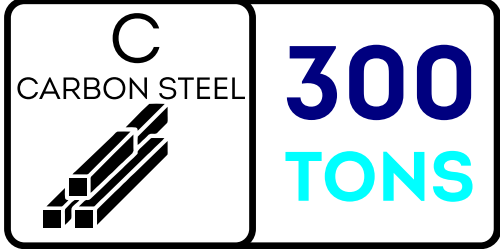


REFERENCE PROJECTS & TESTIMONIALS

Metalinvest Remko Ltd. has extensive experience in manufacturing various metal structures and parts for clients across different industries. We take pride in our successful projects and high customer satisfaction. Here you may see just few of them.

PROJECT NAME:
StoraEnso, OULU Power Boiler

DEMAND PARTS:
Low-Dust Catalyst, Channel, Reactor, Ash



PROJECT NAME:
Stainless steel ducts, MDF plant, New Zealand

DEMAND PARTS:
Clean gas ducts, Pipes and supports



REFERENCE PROJECTS & TESTIMONIALS

PROJECT NAME:

ISOVER, Castolce, Czech Republic - Manufacturing, delivery and Assembly on site

DEMAND PARTS:

Channels, Filters, Steel structures, Clean gas ducts, Silencers, Pipes and supports, Cyclones, Expansion joints



PROJECT NAME:

USA Ducting and Cyclones

DEMAND PARTS:

Pipes, ducts, cyclones and supports



REFERENCE PROJECTS & TESTIMONIALS

PROJECT NAME:
VYNCKE, Amsterdam

DEMAND PARTS:
Adiabatic burning chambers, Pipes and supports

C
CARBON STEEL




120
TONS



PROJECT NAME:
Energy plant, Stuttgart, Germany

DEMAND PARTS:
Channel, Ducts, Silencers, Pipes and supports

C
CARBON STEEL



300
TONS



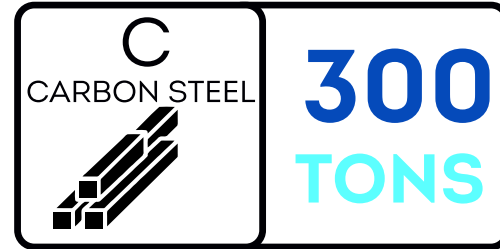
REFERENCE PROJECTS & TESTIMONIALS

PROJECT NAME:

Gutexholzwerkstoff, MDF plant, Germany

DEMAND PARTS:

Ducts, Channel parts, Cyclones, Pipes and supports

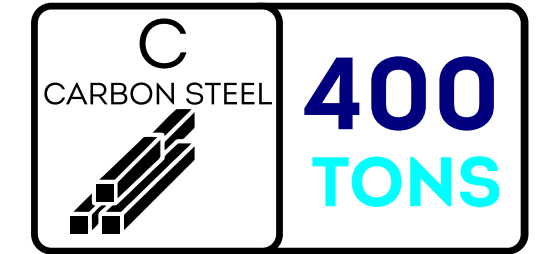


PROJECT NAME:

Kiln modernization projects- RFI manufacturing STEEL, ROMANIA

DEMAND PARTS:

Cyclones, pipes and supports



INSTALLATION WORKS





40,000 SQUARE METERS OF PRODUCTION SPACE

OUR FACILITIES SPAN A TOTAL OF 40,000 SQUARE METERS, COMBINING BOTH OPEN AND ENCLOSED WORKSHOP AREAS SEPARATED CARBON STEEL AND STAINLESS STEEL WORKSHOPS. THIS EXPANSIVE INFRASTRUCTURE IS EQUIPPED WITH STATE OF THE ART MACHINERY,

ENABLING US TO MANUFACTURE A BROAD SPECTRUM OF COMPONENTS, FROM PRECISION ENGINEERED PARTS TO MASSIVE STEEL STRUCTURES. THE LAYOUT IS OPTIMIZED FOR SEAMLESS WORKFLOW, ENSURING EFFICIENCY ACROSS ALL PRODUCTION STAGES.

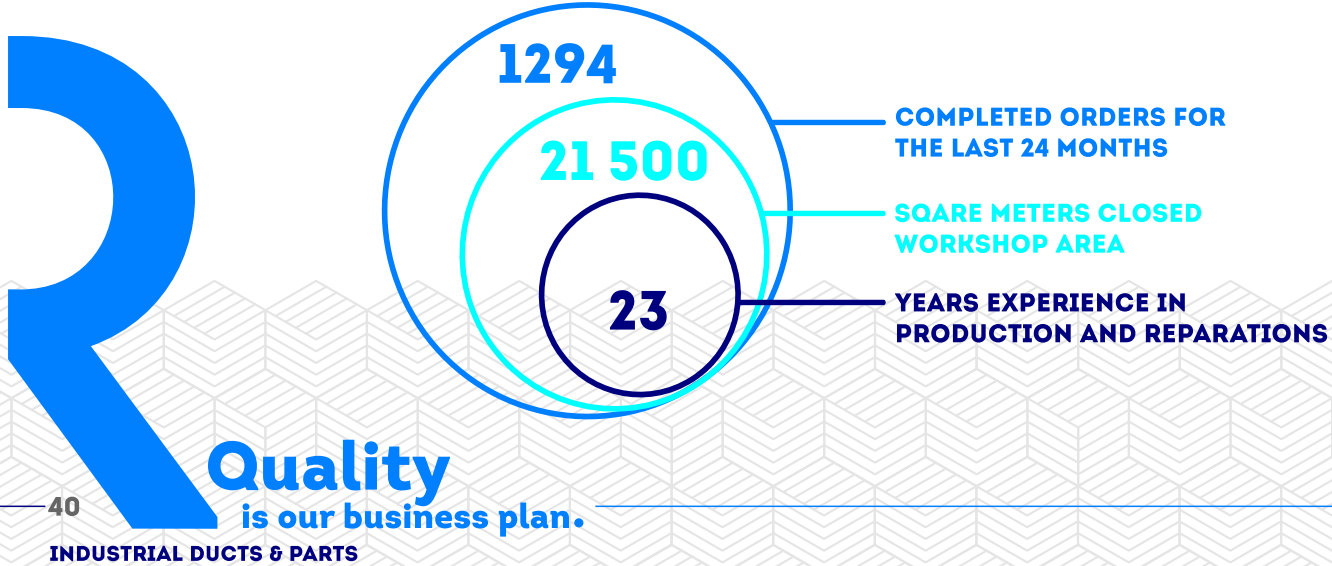


STATS IN 3 AREAS

1,294 COMPLETED ORDERS IN THE LAST 24 MONTHS

Over the past two years, we have successfully delivered nearly 1,300 projects, ranging from custom fabrications to large-scale industrial assemblies. This accomplishment

underscores our ability to handle diverse and complex requirements while maintaining strict adherence to deadlines and quality standards.



23 YEARS OF INDUSTRIAL EXPERIENCE

With over two decades in the industry, we have built a reputation for reliability, innovation, and quality. Our experience extends across numerous sectors including energy production, mining, and engineering solutions, allowing us to anticipate challenges and deliver superior results.